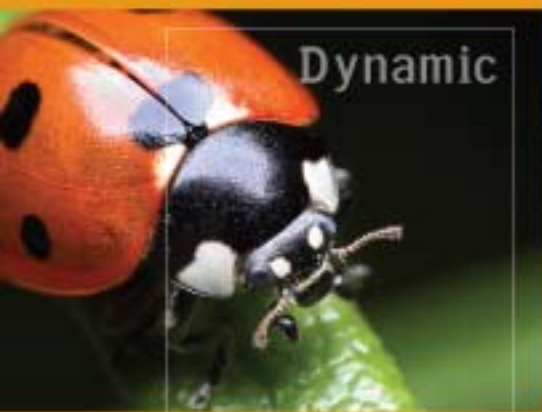


# HD-RH1F

## Digital I/O

The World's Smallest HD Video Camera



Dynamic



Flexible



Ease

### The World's Most Versatile Camera Has Become Even More Flexible.

The revolutionary HD-RH1F is even more powerful with a factory-installed Digital I/O package that includes twin Fiber Optic outputs, and the capability for genlocking to a serial digital signal.

#### Applications

Broadcast Truck, Sports, Nature Programming, Digital Cinema, Episodic Television, Reality TV, Etc.



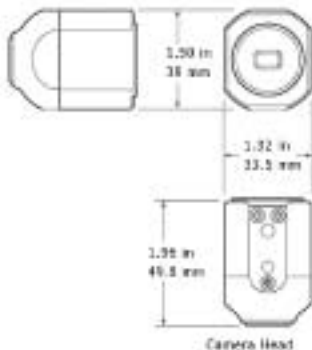
#### Features Include:

- > Fiber Optic directly from camera
- > Uses industry-standard fiber SFP modules
- > Dual link and single link capability
- > Genlock from fiber, SDI, or analog
- > Simultaneous fiber genlock and transmission (with transceiver SFP module)

# ICONIX

# HD-RH1F

Versatile



HD-RH1F	Specifications
Image Sensor	1/3-inch Progressive Square Pixel CCD
Optical System	1/3-inch 3-CCD Prism System
Limiting Resolution	700 TV Lines per picture height (720p) 900 TV Lines per picture height (1080i/p)
Lens Mount	C-Mount
Scanning System	1080p: 60, 59.94, 50, 30, 29.97, 25, 24, 23.98 1080sF: 30, 29.97, 25, 24, 23.98 1080i: 60, 59.94, 50 720p: 60, 59.94, 50, 30, 29.97, 25, 24, 23.98 30n60, 29.97n59.94, 25n50, 24n60, 23.98n59.94 576i: 50 480i: 59.94
Sensitivity	F/8 @ 2000 lux
Signal/Noise Ratio	52dB typical, Y Channel
Quantization	14-Bit
Gamma	Fully Parameterized
White Balance	Automatic (AWB), Manual Point
Black Balance	Automatic (ABB), Manual Point
Gain	0 dB to 15 dB, Manual or Fixed
Electronic Shutter	Fixed, Variable (ELC), Automatic, C-SCAN
Scene File	3 User-Programmable Profiles
Output Signals	HD-SDI/SD-SDI (SMPTE-292/SMPTE-259) BNC x2, Fiber Optic x2: Two Single Link 4:2:2 Dual Link 4:4:4 RGB Dual Link 4:4:4 YCbCr Dual Link 4:2:2 YCbCr for 1080p: 60, 59.94, 50 Analog Video BNC x3, 1Vpp, 750hm, RGB/YPbPr Sync on Y/G or YPbPr/RGB DVI-I RGB, YCbCr
Input Signals	Genlock Input: HD-SDI & SD-SDI: BNC x1 (SMPTE 292M, SMPTE 259M) Fiber Optic: HD or SD with SFP transceiver or receiver module Analog: Tri-Level (HD) or Bi-Level Sync (SD) Remote-Control: RS-232, EIA-485
Power Requirements	12VDC, 30W
Weight	Head: 2.3 Oz (64g) Controller: 4.4lbs (2.0kg)
Dimensions	Head: 1.32"W x 1.50"H x 1.96"D (33.5x38x49.8mm) Controller: 8.35"W x 1.72"H x 12"D (212x44x305mm)
Tripod Mount	Optional Adapter with 1/4-20 and 3/8-16 Thread
Fiber Optic Receptacle	Accepts Industry-Standard SFP modules; dual/single Tx, dual/single Rx** or transceiver (1 Tx and 1 Rx)

\*\*When dual Rx is used (for genlock) only Rx channel 1 is used for genlock.

Features and Specifications subject to change without notice.

Made in the U.S.A.

## HD-RH1F Camera System: Camera Head, CCU, Power Supply



### Iconix Video, Inc.

Corporate Office 7402 Hollister Avenue • Santa Barbara, CA 93117  
T 805.690.3650 • T 800.783.1080 toll free • F 805.690.3655

Hollywood Office Sunset Gower Studios • 1438 North Gower Street  
Building 35, Suite 561 • Hollywood, CA 90028 • T 323.330.0663 • F 323.330.0665

# ICONIX